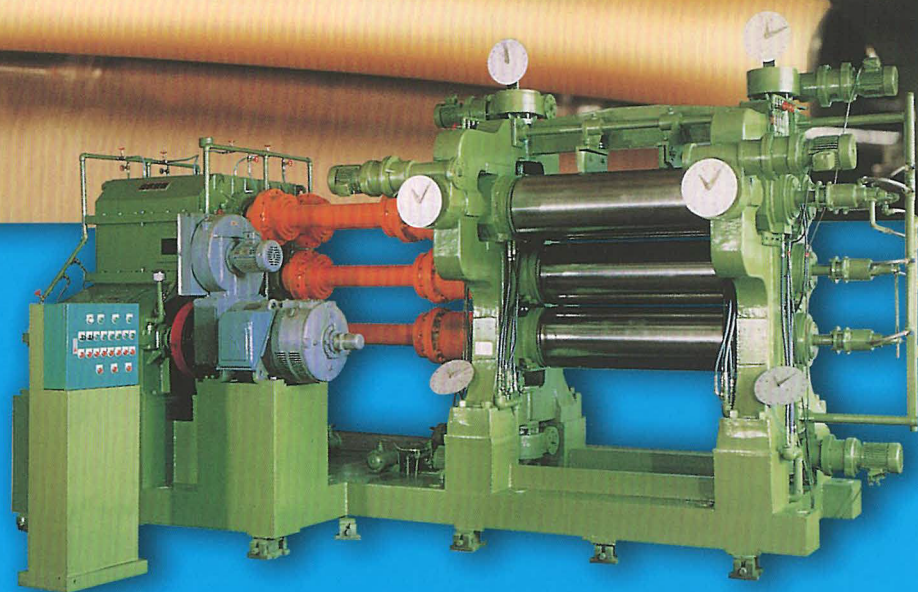


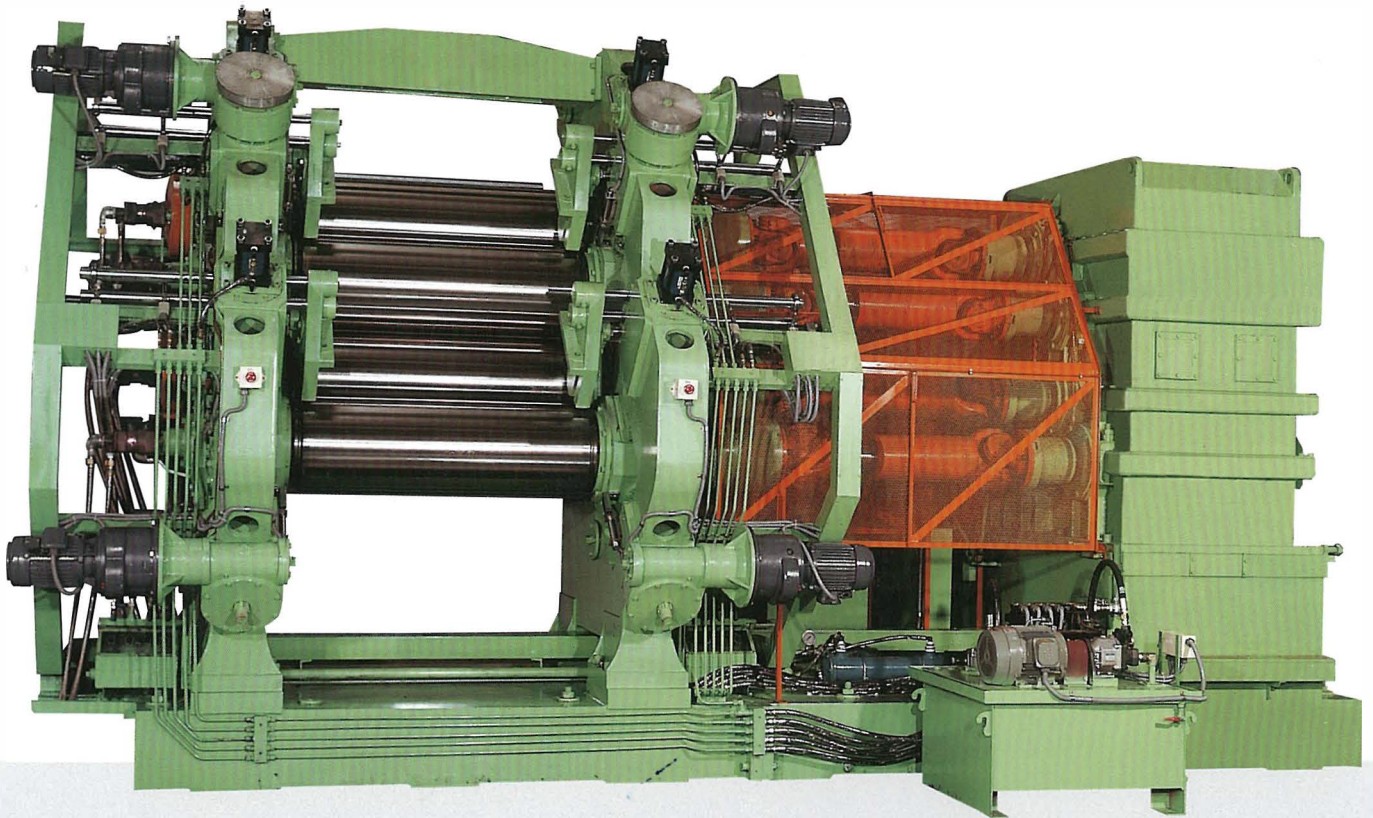
橡 / 塑膠壓延機 (出片機)



**CALENDER FOR
RUBBER AND
PLASTIC**

橡 / 塑膠壓延機 (出片機)

Calendar for Rubber and Plastic



壓延機的主要用途是將已混煉完成的橡膠混料或各種塑膠混料壓延成為厚度均勻的薄膜、薄片或薄板，也可以用於橡膠薄片或塑膠薄片與紡織物的單面或雙面貼合作業。另外，在壓延的過程中可將原料中的空氣壓擠出來，使加硫處理後的成品中不會有氣泡。滾筒的數量愈多，亦即壓延的次數愈多，效果愈好。適用於輪胎貼合，球內胎和鞋口等之製造。操作簡單、效果良好，是一種精密耐用的壓延設備。

The major application of calendar is to press the mixed and refined rubber mixture or various kinds of plastic mixture into uniform thickness of films, sheets and plates. It can also be applied to rubber or plastic sheets in single or double sticking or topping operations with textile fabrics.

During the sheeting process, the machine can force out the air existing in the material for producing the products without air bubbles after vulcanization. The larger the quantity of rolls the calendar has, the more times the sheets are pressed, enabling the calendar to produce high quality and uniform thicknesses of sheets.

Designed and manufactured for a wide variety of roll arrangement to choose from, they are well suited for manufacturing PVC sheets, synthetic rubber, rubber/EVA layer in sponge bottom insole, tire topping, ball tubes and shoes.

Ruggedly constructed throughout, high accuracy, maximum durability, simple operation and much more; you get a superior calendaring effect with YI TZUNG Calenders.

Calender for Rubber and Plastic

二滾筒出片機

TWO ROLL CALENDER

CV2-3 一體式
COMMON BED TYPE

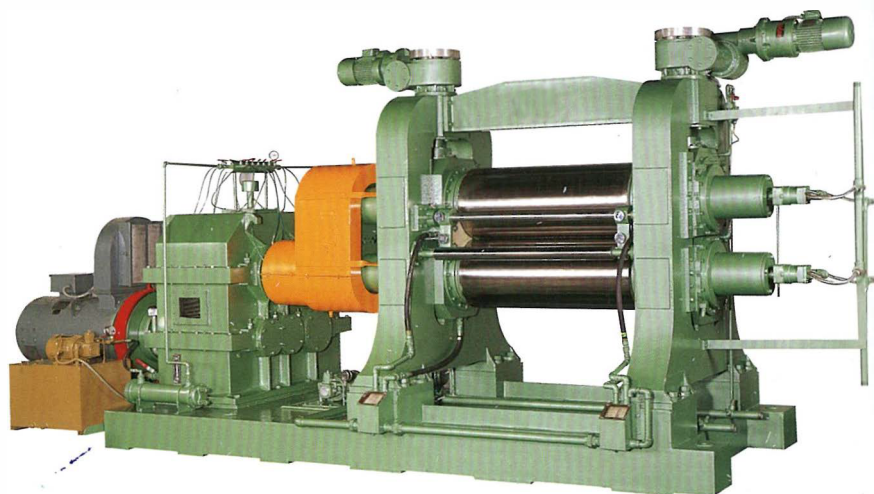
用於生產P.V.C塑膠地磚、輪胎、鞋子等。

Used for making the P.V.C. floor tiles or automobile tyres, footwear, etc.



直立型
VERTICAL TYPE

項次 ITEM	規格尺寸 SIZE OF ROLLS	使用馬力 HORSEPOWER
1	8" Ø × 24" L	20HP
2	10" Ø × 30" L	25HP
3	12" Ø × 36" L	30HP
4	14" Ø × 42" L	40HP
5	16" Ø × 48" L	50HP
6	18" Ø × 54" L	75HP
7	22" Ø × 66" L	125HP
8	24" Ø × 72" L	150HP



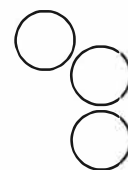
三滾筒出片機

THREE ROLL CALENDER

CV3-4 三軸萬向軸聯軸器傳動
DRIVEN BY THREE SHAFT UNIVSER JOINT

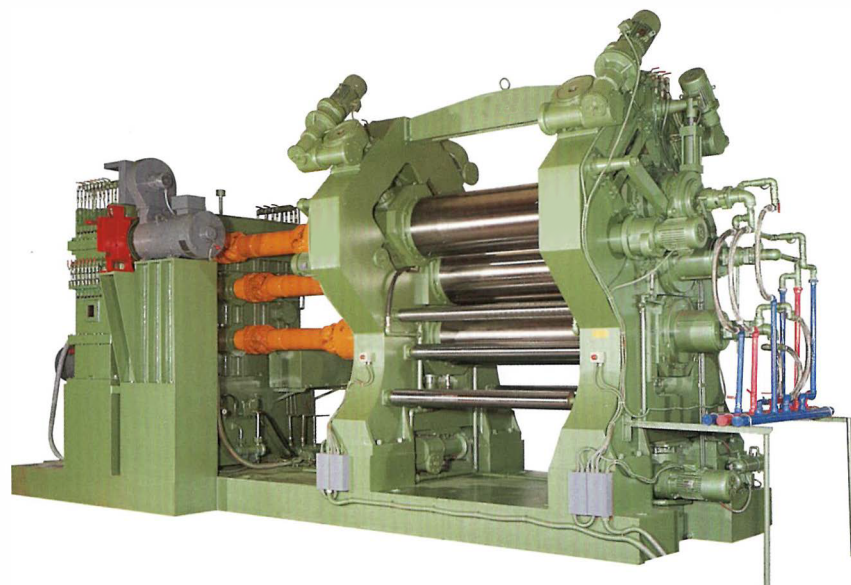
用於生產輪胎簾布單面貼合、橡膠擦入作業及片狀壓出等。

Used for making rubber sheets and for coating or friction one side of tyre cord with rubber.



斜縱型
INCLINE TYPE

項次 ITEM	規格尺寸 SIZE OF ROLLS	使用馬力 HORSEPOWER
1	10" Ø × 30" L	30HP
2	12" Ø × 36" L	50HP
3	14" Ø × 42" L	50~75HP
4	16" Ø × 48" L	75~100HP
5	18" Ø × 54" L	100~125HP
6	22" Ø × 66" L	125~150HP
7	24" Ø × 72" L	150~200HP
8	32" Ø × 100" L	400~500HP



Calender for Rubber and Plastic

四滾筒出片機

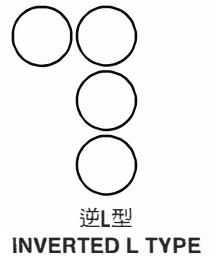
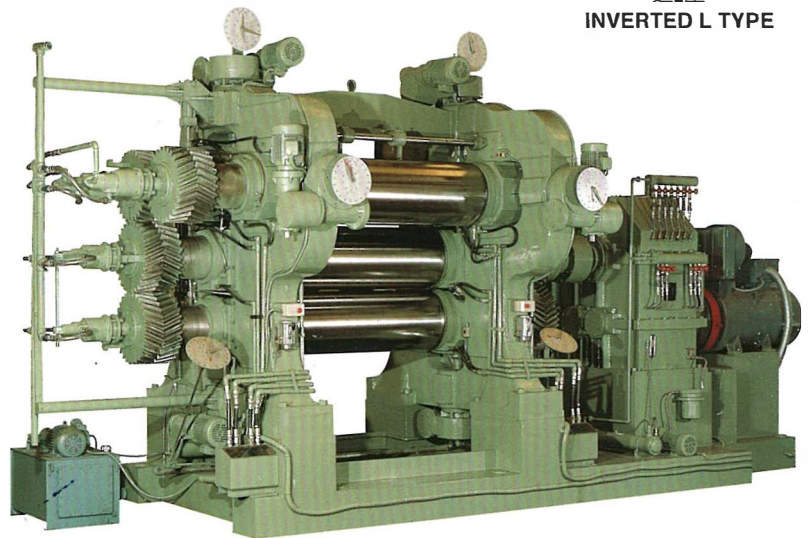
FOUR ROLL CALENDER

▶ **CV4-3 一體式
COMMON BED TYPE**

用於生產輪胎簾布與橡膠雙面貼合或壓延橡膠或P.V.C薄片。

Used for coating double side of tyre cord with rubber and for making rubber or P.V.C. sheets.

項次 ITEM	規格尺寸 SIZE OF ROLLS	使用馬力 HORSEPOWER
1	8" Ø × 24" L	20HP
2	10" Ø × 30" L	40HP
3	12" Ø × 36" L	50HP
4	14" Ø × 42" L	75HP
5	16" Ø × 48" L	100HP
6	18" Ø × 54" L	125HP
7	22" Ø × 66" L	150~175HP
8	24" Ø × 68" / 72" L	200~250HP



四滾筒出片機

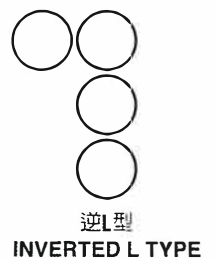
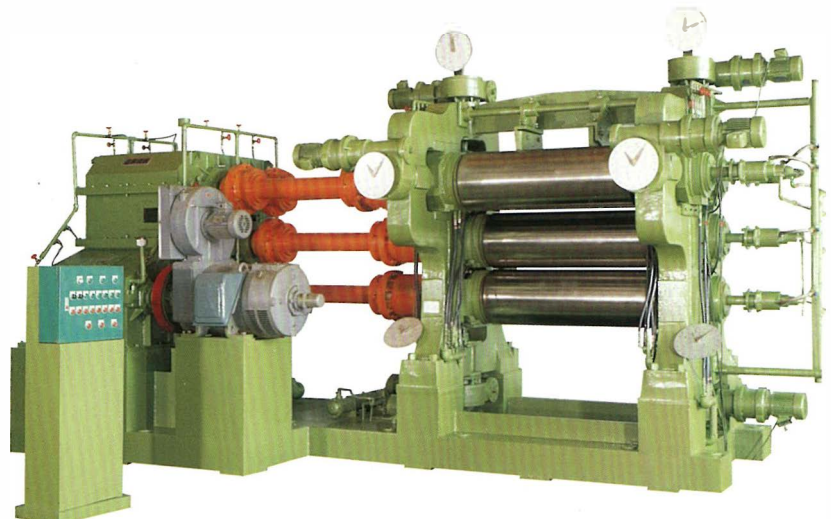
FOUR ROLL CALENDER

▶ **CV4-4 四軸齒輪聯軸器傳動
DRIVEN BY FOUR SHAFT GEAR COUPLING**

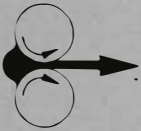
用於生產輪胎簾布與橡膠雙面貼合或壓延橡膠或P.V.C薄片。

Used for coating double side of tyre cord with rubber and for making rubber or P.V.C. sheets.

項次 ITEM	規格尺寸 SIZE OF ROLLS	使用馬力 HORSEPOWER
1	10" Ø × 30" L	40HP
2	12" Ø × 36" L	50HP
3	14" Ø × 42" L	50~75HP
4	16" Ø × 48" L	100~125HP
5	18" Ø × 54" L	125~150HP
6	20" Ø × 60" L	150~175HP
7	22" Ø × 66" L	150~200HP
8	24" Ø × 68" / 72" L	200~250HP



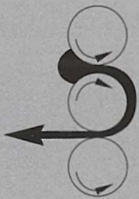
壓延機的滾筒排列方式 Roll Arrangement



直立型二滾筒壓延機

VERTICAL TYPE 2 ROLLS:

Suitable for rubber or plastic sheet calendering.



直立型三滾筒壓延機

VERTICAL TYPE 3 ROLLS:

Suitable for calendering effect of medium rubber or plastic sheet. It's also well suited for single surface sticking on rubber or plastic.



斜縱型三滾筒壓延機

INCLINE TYPE 3 ROLLS:

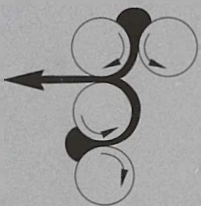
Suitable for calendering effect of medium rubber or plastic sheet. It's also well suited for single surface sticking on rubber or plastic.



直立型四滾筒壓延機

VERTICAL TYPE 4 ROLLS:

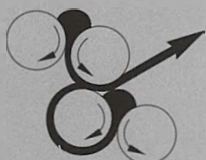
Suitable for calendering effect of more uniform thickness of rubber sheet. It's also well suited for double sides sticking for rubber and cloth as well as artificial rubber P.V.C. calendering.



逆L型四滾筒壓延機

INVERTED L TYPE 4 ROLLS:

Suitable for combining two or multiple color calendering for tires.

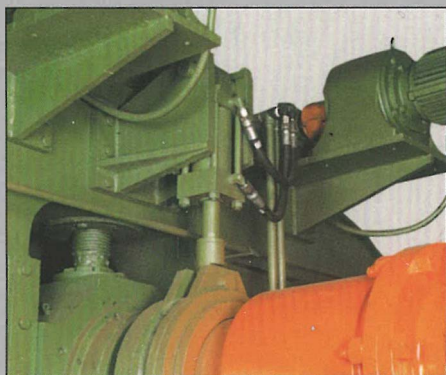


S型四滾筒壓延機

S TYPE 4 ROLLS:

Suitable for combining multiple color calendering, or tire and curtain cloth sticking to rubber.

選購設備 OPTIONAL



拉回 / 彎曲裝置

此裝置可以用來補償滾筒輪面因高壓力而產生偏頗彎曲的誤差及保持滾筒間隙一致性，讓膠片厚度的均勻可以確保在最佳效果。

PULL BACK / BENDING DEVICE

To compensate the strain on roll surface where a high pressure is applied, and keep even clearance of the roll gap, guaranteeing a uniform thickness production.

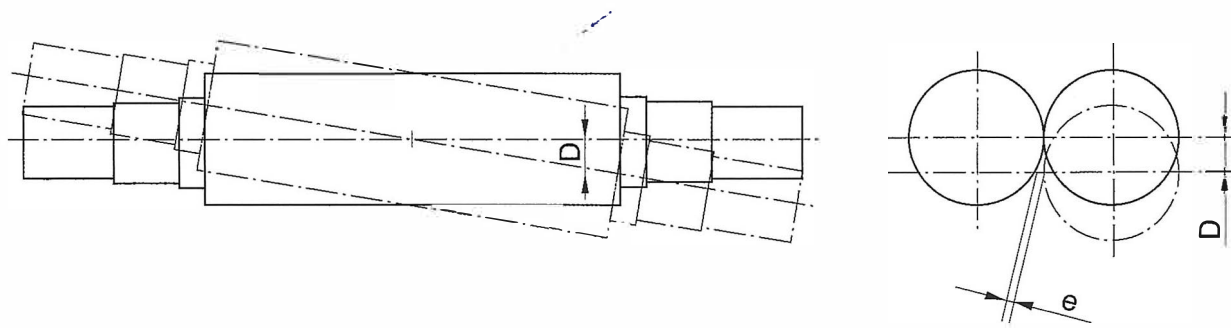


鑽孔式滾筒

鑽孔式滾筒的特點除了滾筒輪面可以獲得最快速的導熱效果、傳導的熱度變異性最低、最恆溫，另其構造也擁有最佳的堅硬度與最小撓曲度。

DRILLED ROLL

It permits fast heating control on roll surface, minimum temperature difference and uniform temperature distribution, maximum rigidity and minimum deflection.



滾筒交叉裝置

利用滾筒交叉模式來加強校準的效果讓膠片厚度可以得最佳的均一性。

CROSSED ROLL ARRANGEMENT

It offers additional calibration for uniformity of product thickness.

● 本型錄為提供客戶訂購參考用，若遇設計及規格變更，恕不另行通知。

This catalogue is for order reference only, design and specifications are subject to change without notice.