



THP Series

Slab Side Rubber
Oil Seal Vulcanization
Molding Machine

真空油封橡膠硫化機系列



THP-V-250-3RT-S-PCD (CE)

Rubber Oil Seal Vulcanization Molding Machine (Slab Side Type)

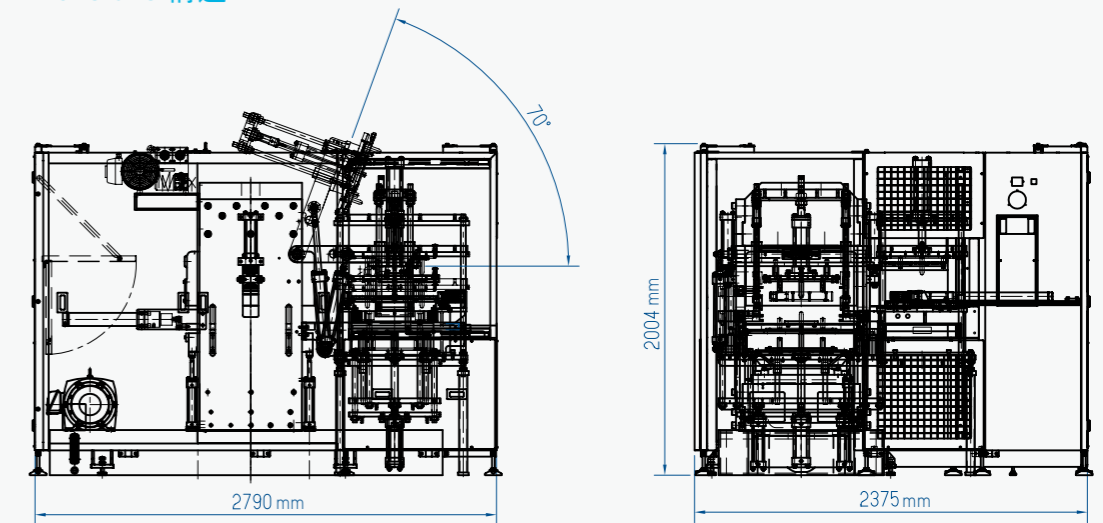
真空油封橡膠硫化機

Mechanical features at a glance

- Upper plate turnover degree is adjustable for easily clean.
- Low working height for ergonomic engineering.
- Open working area with safety light curtain protection for easily process monitor.
- Suitable for 2 or 3 layer molds.
- 可調式翻板角度，方便模具卸載。
- 低工作高度，符合人因工程。
- 開放式工作區域，搭配安全光柵保護，方便流程監控。
- 適用2層及3層模具。



Dimensions 構造



Features 特寫說明

- Cavity plate moves to right and knock out for parts collecting automatically.
- Could be equipped with conveyor belt for automation system improvement.
- 模穴板右移拍出成品自動收料。
- 可搭配輸送帶裝置，提升自動化流程。

THP-V-250-3RT-S-PCD (CE)

Rubber Oil Seal Vulcanization
Molding Machine (Slab Side Type)
真空油封橡膠硫化機

Mechanical features at a glance

- Equipped with top, lower and middle plate for various molds design to knock out products.
- Full caging with light curtain for safety operation.
- Mold in/out, bumping and stripping all completed in one cycle automatically, every stage is free adjustable.
- Simplicity in mechanism for easy maintenance.
- 搭配上拍、下拍及中拍可運用於各種模具設計拍出成品。
- 全包式圍網設計，搭配光柵裝置，確保操作安全。
- 進退模、排氣、離型全自動循環，每階段可自由控制。
- 機構設計精簡，維修保養更方便。



THP-V-150-2RT-S-PCD

Rubber Oil Seal Vulcanization
Molding Machine (Slab Side Type)
真空油封橡膠硫化機

Mechanical features at a glance

- Vacuum cover design - reduces curing time and increases production efficiency.
- High speed vacuum system - eliminates air inside cured rubber to have products with zero defect quality.
- Mold in/out, bumping and stripping all completed in one cycle automatically, every stage is free adjustable.
- 真空罩裝置—硫化時間大幅縮短，生產效率提升。
- 高速真空系統—原料流動性佳、消除成品內包氣泡，成品零缺點。
- 進退模、排氣、離型全自動循環，每階段可自由控制。

Products 製造成品

- Oil seals
- Bearing seals
- Automotive parts
- 工業用油封
- 機械軸封
- 汽機車用油封



Features 特寫說明

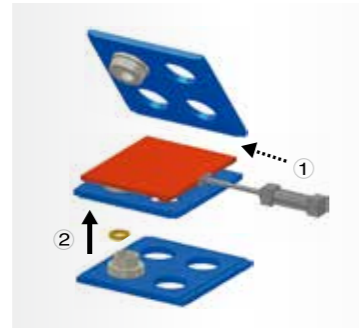
- Plate turn over at 60°, for easy parts removal.
- 翻板角度達60°，方便成品取出。

Ejecting Mechanism 拍板頂出機構說明

Upper Plate Ejection Device
上拍板 頂出裝置



Middle Plate Left Side Ejection Device
中拍板左移 頂出裝置

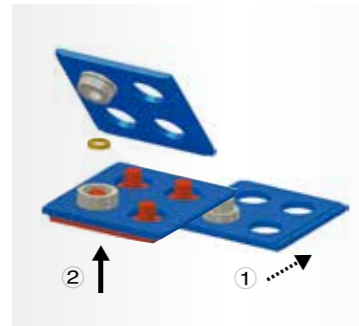


1. Middle plate moves to left side.
 2. Middle bolster plate lifts upwards and eject by middle plate.
1. 中拍板左移
2. 中模架板上升，利用中拍板頂出成品

Lower Plate Ejection Device
下拍板 頂出裝置



Middle Mold with Lower Plate Ejection Device
中模下拍板 頂出方式



1. Lower mold move backwards.
 2. Lower plate lift up and eject.
1. 下模後退
2. 下拍板上升，頂出中模成品

Optional Accessories 選購配備



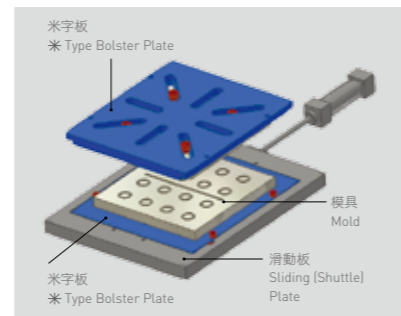
Full Color Touch Screen
大尺寸彩色人機

Ease of operation, parameter setup and monitoring.
方便人員操作，參數設定與監控。



Safety Sensor & Light Curtain
安全電眼

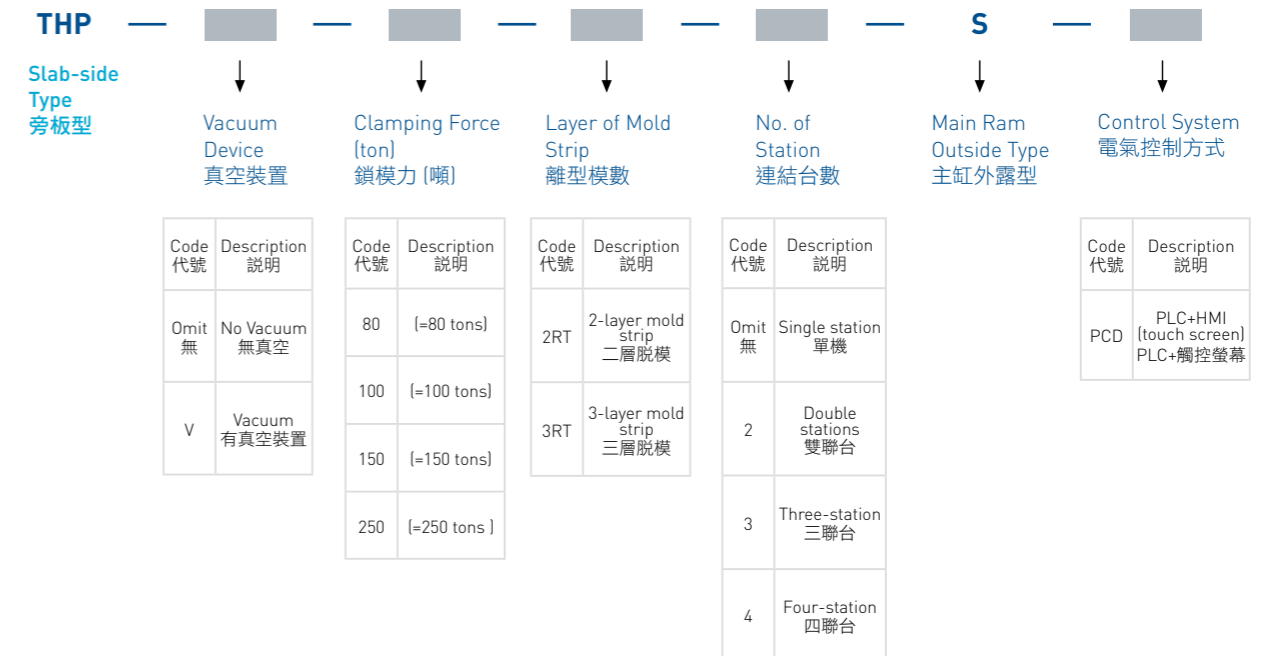
Combined with PLC control system, ensures full protection of operators.
搭配PLC程式控制，確保操作人員安全。



* Type Bolster Plate
米字型模架板

By fixing “*” type bolster plate, THP series machines can be used for O-rings, gaskets and various rubber parts.
THP機型加裝米字型模架板(米字板)後，即可使用板模生產O型環、墊片及其他橡膠產品。

THP Model Guide 型式說明



THP Series Technical Specifications 機器規格表

Machine Type 機型		THP-V-80	THP-V-100	THP-V-150	THP-V-250
Clamping Force 鎖模力	ton	80	100	150	250
Piston Diameter 活塞直徑	mm	§ 225	§ 250	§ 300	§ 400
Heating Platen Size 熱盤尺寸	mm	250x300	350x400	450x480	570x610
Bolster Plate Size 模架板尺寸	mm	290x320	390x420	500x520	620x620
Daylight 最大開檔	mm	200			
Stroke 最大行程	mm	140			
Vacuum Accessories 真空方式		Vacuum Cover Type 真空罩式			
Power Consumption 使用功率	kW	4.8	8.76	8.76	18.2
Turnover Degree 翻轉角度		60° (2RT)		45° (2RT)	
		45° (3RT)			
Dimension (mm) 外觀尺寸	2RT	1165 x 1976 x 1987	1145 x 2080 x 2000	2362 x 1365 x 1982	1032 x 3026 x 2085
	3RT	1534 x 1970 x 1870	1510 x 2262 x 1926	2362 x 1365 x 1982	1718 x 3139 x 2073

TR-V-240-PCD

Precision Rubber Slicer with Optional Cooling Tower 精密橡膠切片機 (選配冷卻塔)

Close Loop and Smart E-weight Data Transfer 閉環迴路+飛切系統

Mechanical features at a glance

- Simplify process decrease adjusting time.
- Equipped with smart E-weight data feedback system (close loop), enable to adjust cutter speed and working pressure automatically.
- Weight precision within $\pm 1\%$ (95% finished product).
- With clean window design for easily removing remaining and changing rubber compounds.
- Equipped with vacuum system to get rid of air inside rubber compounds.
- Cutter with advanced balance design that runs stably and silently.
- 縮短調整時間。
- 本機使用量測系統搭配油路與重量回饋控制，自動依實際需求調整擠出壓力與切刀速度。
- 重量精度: $\pm 1\%$ 內 (95%成品)。
- 掃除窗設計易於清理更換膠料。
- 內建真空系統，減少膠料氣泡。
- 特殊刀柄配重設計，運轉安靜穩定，增加切刀使用壽命。

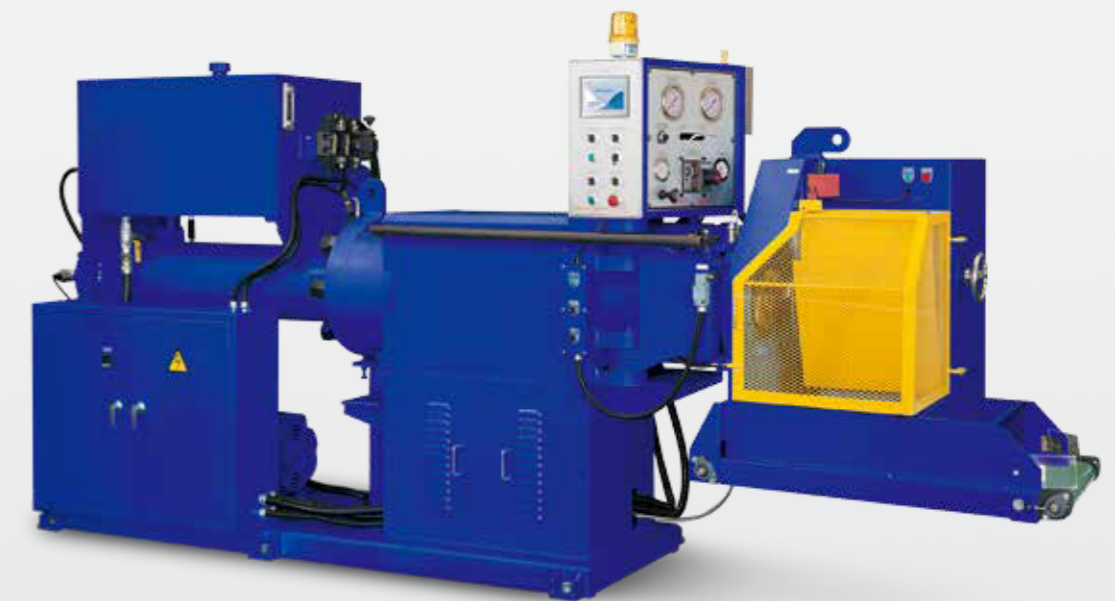


TR-250-PCD

Precision Rubber Slicer 精密橡膠切片機

Mechanical features at a glance

- Advanced digital HMI controller for easy setup and operation.
- Parameter recording for fast mold changing efficiency.
- Front die can be easily changed to different shapes as required.
- Cutter with advanced balance design that runs stably and silently.
- 採先進PCD數位式觸控系統，操作設定更便利。
- 附模組記憶功能，方便換模操作，節省人工切料時間。
- 特殊模頭設計，可依不同需求變化切片形狀。
- 刀頭特殊平衡設計，運轉安靜穩定。



Cooling Tower & Conveyor Belt 冷卻塔與輸送帶

- Cooling by compressed air and water.
- Noise-reducing with low horsepower, and recyclable cooling water for energy saving.
- Ensured cut compound not getting stuck together or being over-cured.
- 壓縮空氣與水冷卻共用。
- 噪音小，傳動馬力小，且冷卻水可回收過濾再利用。
- 避免產品相互沾黏與過硫，增加良率。



TR Series Precision Rubber Slicer 精密橡膠切片機

Machine Type	機型	TR-V-240-PCD	TR-250-PCD
Volume of Material barrel (Max. Batch Capacity)	料筒置料 (一次最大可裝膠料容) L	40	45 60(Option) (選配)
Horsepower	使用馬力	15HPx4P	15HPx4P
Cutter Motor	切刀馬達	Servo Motor 伺服馬達	Inverter Motor 變頻馬達
Vacuum Pump	真空泵浦 kW	0.55	Option 選配
Rubber Clean Window	膠料清除窗	Standard 標準配置	Option 選配
Finished Product Size (O.D.)	成品尺寸(外徑) mm	5-80	5-80 80-160 (Option)(選配)
		0.3-300	0.3-900
Weight of Finished Product	成品重量 g	The data will be limited by different cutter speed, die mold, extruding pressure and rubber compound hardness. 需搭配切刀速度、模具、擠出壓力調整及膠料硬度限制	
Precision of Finished Product	成品精度	95% Finished Product within ±1% 95%成品在±1%	95% Finished Product within ±1.5% 95%成品在±1.5%
Quantity of Cutter	切刀數量	Single-cutter 單刀型	
Cutter Speed	最高刀速 rpm	400	250
Speed Changing of Cutter	刀速變速方式	Free-stage Adjustable 可無段調整	
Temp. of Material Barrel	料筒溫度 °C	Max.90°C	
Temp. Precision of Material Barrel	料筒溫度精度 °C	±5°C	
Heat Transfer	傳熱方式	Water 水	
Weight of Final Remains	最後殘料重量 kg	約 5 (Approx.)	
Feed Capacity Control Way	成品料重控制方式	Feed Back System 飛切系統	Auto Setting and Stop 自動設定
Digital Touch Screen Controller	PCD數位式觸控系統	Standard 標準配置	
Dimensions	外觀尺寸 mm	(L)5128 X (W)1080 X (H)1911	(L)4230 X (W)1310 X (H)1980 (L)4862 X (W)1310 X (H)1980
Net Weight	機台淨重 kg	5040	2550 3900

TEST Series Oil Seal Gyration Testing Machine 油封迴轉試驗機

Machine Type	機型	Shell Gyration 殼轉	Micro-pressure 微壓	Low Pressure 低壓	Medium Pressure 中壓	High Pressure 高壓
Testing Pressure Range	可測試壓力範圍 kg/cm ²	MAX: 0.3	MAX: 0.3	0.5~6	5~30	30~210
Pressure Adjustment	壓力調整方式	Manual Adjust 手動		Proportional Adjust 比例式		
Spindle Range	可測軸徑範圍 mm	φ 15~ φ 120	φ 15~ φ 120	φ 5~ φ 170	φ 5~ φ 80	φ 5~ φ 80
The Shell /Housing Diameter	最大殼徑	φ 150	φ 250	φ 200	φ 120	φ 110
Testing Spindle Speed Range	測試軸可調轉速範圍 rpm	200~6000	200~10000	200~6000 (10000選配)	200~6000	200~3000
Testing Temperature (MAX)	最高使用溫度 °C	120°C				
Inspection of Seal Leaking	洩漏檢測方式	Visual Check 目視	By Oil Mass of Leaking Cup 量杯目視	By Leaking Cup or Auto Detect 量杯或自動檢出		
Setting of Testing Parameter 每一模式可設定之條件						
(1)Testing Time	(1)運轉時間 1H	•	•	•	•	•
(2)Stop Time	(2)停止時間 1min	•	•	•	•	•
(3)Testing Speed	(3)轉速設定 rpm	•	•	•	•	•
(4) Temperature	(4)溫度 °C	•	•	•	•	•
(5)Testing Pressure	(5)壓力 kg/cm ²	•	•	•	•	•
(6)Testing Gyration (Clockwise / Counter Clockwise)	(6)轉向(正逆)	•	•	•	•	•
Cycle Numbers	模式循環數	Max. 9999 Cycles				

TEST-H-PCD / TEST-S-PCD Twin-shaft Oil Seal Gyration Testing Machine 雙軸油封迴轉試驗機

Mechanical features at a glance

- Suitable for oil seal high pressure condition and abrasion testing.
- Testing shaft can gyrate clockwise / anti-clockwise.
- Attached with temperature recorder to record details of temperature, speed and gyration / start / stop time.
- PC connection control system can be customized.
- Fully automatic control and setting (including pressure and temperature).
- 適用於油封高壓、耐磨耗測試。
- 附加溫度計錄器，完整記錄溫度、迴轉速度及迴轉/啟動/停止時間。
- 連線監控系統可依客戶需求規劃設計。
- 全自動控制(凡壓力、溫度設定及控制裝置)。

Standard 標準型



High Pressure Type 高壓軸轉型



※Remarks: 1. TEST-S-PCD with shell gyration type and TEST-H-PCD with shaft gyration type is available.
2. For usage of oil temperature over 150°C, appropriate type of oil should be prepared by buyer.
3. Optional up to 10,000rpm.
4. Pressure setup available for low & middle pressure type.
5. Expect for shell gyration and micro-pressure type, it'll be equipped with safety fence and pressure protection device.

※註：1. 亦有標準殼轉型及高壓軸轉型。
2. 欲使用高於150°C之油溫測試需由客戶自備合適條件之油品。
3. 選配轉速達10,000rpm。
4. 低壓及中壓可設定壓力。
5. 低壓以上之規格搭配防護罩與超壓自動洩壓保護設備，確保操作安全。

TRD

Seal Shell (Metal Insert)
Rotary Air-dryer
油封鐵殼風乾迴轉機



Machine Type 機型	TRD Single 單聯	TRD Double 雙聯
Capacity per time 處理能力 kg/time	20	20x2
Rotary Speed 轉速 rpm	Adjustable 可變式	
Total Power 總用電量 kW	1.2	2.4
Machine Dimension WxLxH 尺寸 mm	850x1450x1150	1270x1450x1150
Machine Weight 重量 kg	150	250

TA

Seal Shell (Metal Insert)
Adhesive Applying Machine
浸藥附著機



Machine Type 機型	TA-30	TA-50
Capacity per time 處理能力 kg/time	30	50
Electrical Power 電熱 kW	7	
Total Power 總用電量 kW	8	
Air Pressure 空氣壓力 kg/cm ²	5-7	
Machine Dimension WxLxH 尺寸 mm	1600x1700x2250	1900x1700x2250
Machine Weight 重量 kg	2500	2800

TS

Automatic Feeding & Cutting Machine
橡膠自動切斷機



Machine Type 機型	TS-20	TS-25
Blade Width 刀寬度 mm	608	759
Width of Machine 機械寬度 mm	1130	1260
Height of Machine 機械高度 mm	1280	
Cutting Speed 每分鐘切料 times/min	57	
Horse Power 馬力 HP	1	
Width Range 調整切斷寬度 mm	1-95	
Weight 重量 kg	420	460

TD

Rubber Slitting Machine
橡膠分條機



Machine Type 機型	TD-20	TD-25
Blade Width 刀寬度 mm	608	760
Width of Machine 機械寬度 mm	1068	1220
Height of Machine 機械高度 mm	1200	
Cutting Speed 每分鐘切料 mm/min	8200	
Horse Power 馬力 HP	1	
Weight 重量 kg	230	260