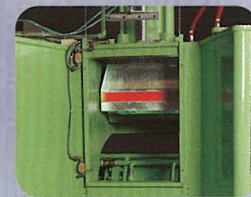
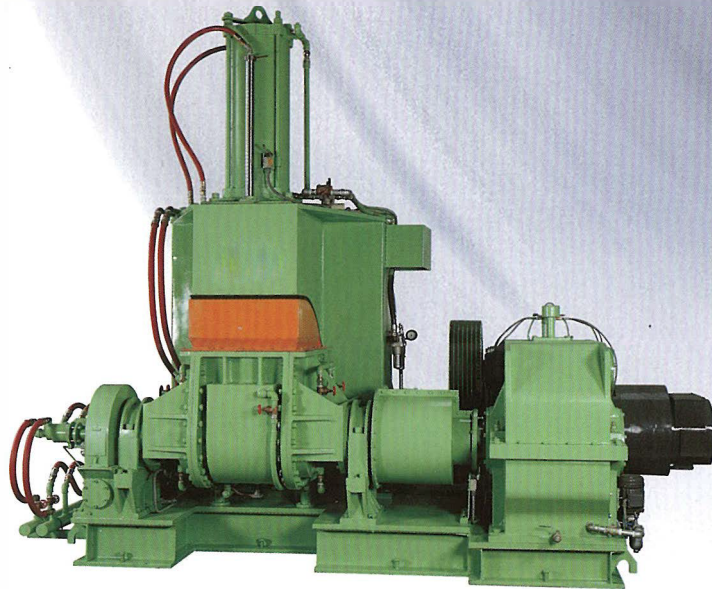


橡膠/塑膠捏合機

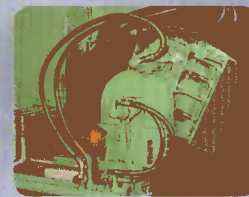
DISPERSION KNEADER FOR RUBBER AND PLASTIC

倒料框式捏合機

TILTING DISPERSION KNEADER FOR RUBBER AND PLASTIC



▲後投料口
Back feed



▲135° 傾倒裝置
135° Tilting device

加壓式捏合機HD型

適用於生膠、合成橡膠、塑膠等原料之素練或混練作業。本機種結構堅固、混合容量大、速度快、效果良好、全自動溫度控制簡化作業程序、節省人力，並能使產品品質更為穩定。後面進料前面出料的設計，使生產流程更為順暢，並可由後窗觀察混練情況。密閉式混練室可確保作業安全，維護環境清潔，混練室可前傾135°，易於卸料，色料之清除與更換也很方便。此機種裝設簡單，不必挖地基可隨時改變生產線，使用壽命長、故障率低、保養容易，是理想混練設備。

Dispersion Kneader HD Type

This Dispersion Kneader is suitable for processing single or mixing numerous raw materials, including natural rubber, synthetic rubber, plastic and more. The model has a sturdy construction.

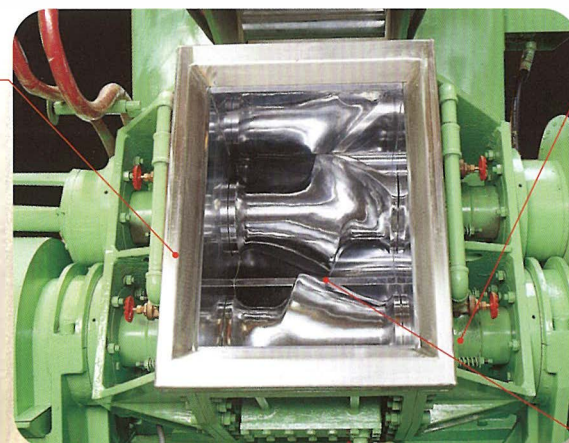
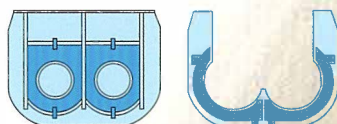
It features a large mixing capacity, high speed, excellent performance, fully automated temperature control, a simplified operating process, labor savings, and stable product quality.

A rear input, front output design results in smooth flowing production and a back window design allows observation of mixing conditions. Its sealed mixing chamber ensures safe operation and eliminates the environmental pollution problem.

The mixing chamber has a 135° dumping inclination for easy removal and changing of coloring ingredients.

The machine is easy to install and requires no special foundation. Production can be changed at any time. It features a durable, low failure rate, and easy maintenance. It's a ideal mixing equipment.

內建式水套/容易控制及穩定各材料之混練溫度
THE BUILT IN WATER JACKET/EASILY CONTROL AND STABILIZE THE TEMPERATURE OF A WIDE RANGE OF MATERIAL.



▲攪拌桶 MIXING CHAMBER

可傾式攪拌桶/方便更換混合材料及清理組件

TITLING MIXING CHAMBER / COMPOUNDED MATERIAL CAN BE CHANGEABLE EASILY AND EASILY TO CLEAN THE MIXING UNIT.

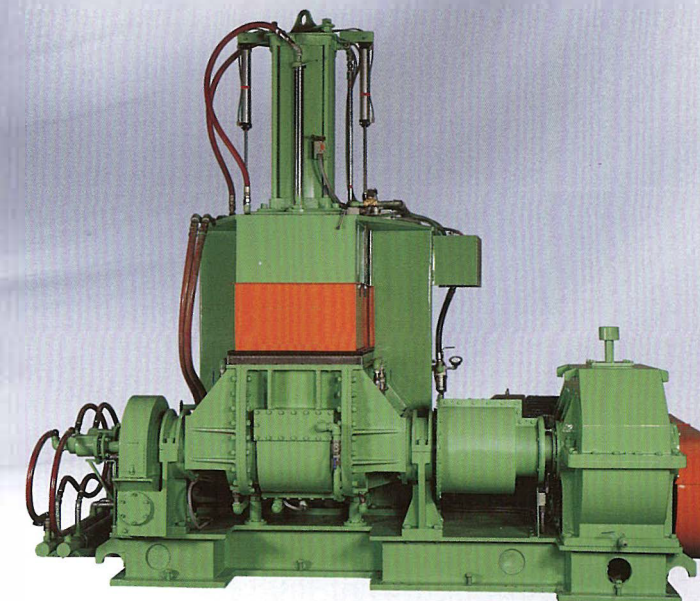
止粉裝置/更容易清理與更換
DUST SEAL DEVICE/EASY TO BE REPLACED AND EASY TO CLEAN.



滾軸/即使是最硬的膠料亦可輕易混練
MIXING ROTOR/CAN EASILY COMPOUND THE RUBBER OR PLASTICS MATERIAL EVEN COMPOUND THE HARDEST RUBBER MATERIAL. (optional / 選購設備)

防塵罩式捏合機

DUST PROOF DISPERSION KNEADER FOR RUBBER AND PLASTIC

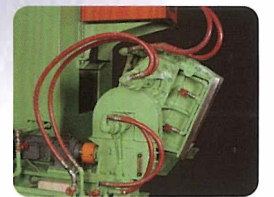


▲加壓重錘防漏裝置
Pressure lid leakage resistance device

▲前投料口
Front feed



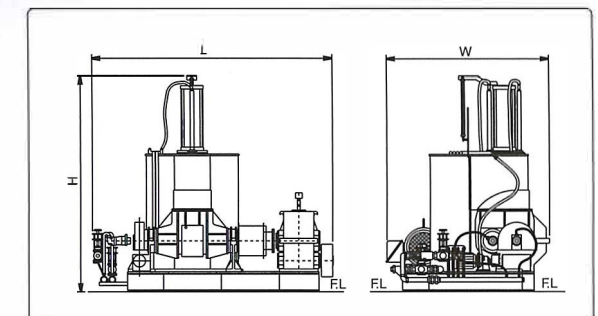
▲後投料口
Back feed



▲135° 傾倒裝置
135° Tilting device

特點：

- 1.應用於橡膠、塑膠材料之發展為理想設備。
- 2.高分散性的滾軸設計，適合混練高品質材料。
- 3.優質的攪拌桶結構，對於耐熱、耐磨耗、防腐蝕的要求，均有良好的抵抗能力。(選購設備)
- 4.特殊止粉裝置設計，具有良好的防漏效果。



FEATURES

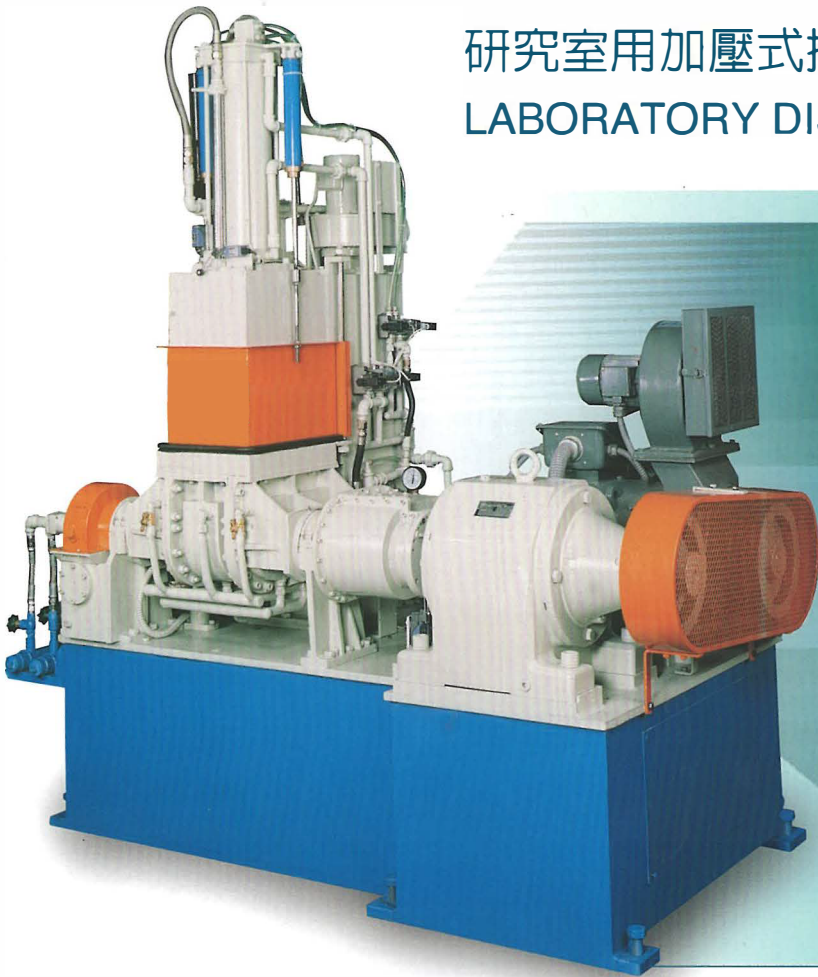
- 1.It is an idea equipment for development of the latest rubber or plastic.
- 2.The design with high dispersion for rotors are suitable for the compound of high quality material.
- 3.The mixing chamber is constructed with heat resistance, wear out resistance and anti-corrosive. (optional)
- 4.Special design on dust stop ring can efficiently prevent leakage from mixing chamber.

規格 Specification

機 型	Model	YK-35HD	YK-55HD	YK-75HD	YK-110HD	YK-150HD
混合容積 (公升) Mixing Capacity (L)		35	55	75	110	150
主電動機馬力 Main motor horse power		50-70HP	75-100HP	125-150HP	150-200HP	200-300HP
傾倒馬力 Tilting motor		3HP	5HP	5HP	5HP	7½HP
空壓機馬力 Air compressor		5HP	7½HP	7½HP	7½HP	7½HP
排塵裝置 Exhaust fan		1HP	1HP	1HP	1HP	1HP
投料位置 Material feed		後 (BACK)	後 (BACK)	後 (BACK)	後 (BACK)	後 (BACK)
溫度控制 Temp control		全自動 (AUTOMATIC)	全自動 (AUTOMATIC)	全自動 (AUTOMATIC)	全自動 (AUTOMATIC)	全自動 (AUTOMATIC)
操作盤位置 Control panel position		後 (BACK)	後 (BACK)	後 (BACK)	後 (BACK)	後 (BACK)
滾軸轉速 Rotors revolution		30/25	30/25	30/25	30/25	30/25
常用空壓 Normal air pressure		6-7kg/cm²	6-7kg/cm²	6-7kg/cm²	7-8kg/cm²	7-8kg/cm²
外觀尺寸 (參考用) Outline Dimesion m/m (for reference)						
高 H		2,890	3,076	3,150	3,600	4,100
寬 W		1,800	2,130	2,400	2,490	3,050
長 L		3,669	4,010	4,200	4,930	5,480

This catalogue is for reference to order only. The specifications are subject to change without notice. 本型錄僅供客戶訂購參考用。若遇設計，以及規格變更，恕不另外通知。

研究室用加壓式捏合機 LABORATORY DISPERSION KNEADER



規格說明 SPECIFICATION

機型	MODEL	YK-3		
混合容量	MIXING CAPACITY	3 LITER	3 LITER	3 LITER
主馬達馬力	MAIN MOTOR HORSE POWER	AC 10HP	DC 20HP	DC 30HP
傾倒馬達	MOTOR FOR CHAMBER POWER	AC 1HP	AC 1HP	AC 1HP
抽風機馬達	EXHAUST FAN	AC 1/4HP	AC 1/4HP	AC 1/4HP
投料位置	FEED POSITION	FRONT	FRONT	FRONT
操作盤位置	CONTROL PANEL POSITION	FRONT	FRONT	FRONT
滾軸轉速	ROTOR'S REVOLUTION	30/25 R.P.M.	60/44 R.P.M.	100/73 R.P.M.
常用空壓	AIR PRESSURE	6-7kg/cm ²	6-7kg/cm ²	6-7kg/cm ²
溫度控制	TEMP CONTROL	AUTO	AUTO	AUTO

★本型錄為提供客戶參考用，若遇設計及規格變更，恕不另外通知。
 This catalogue is for order reference only. designs and specifications are subject to change without notice.